

# SEELIVE TECHNOLOGIES PVT. LTD.

1st Floor, Plot No. 7, 8, 9, Garg Shopping  
Mall, Service Centre, Near BPIT College,  
Opp. Sec-11 (Extn.), , Delhi 110085

see*live*



# WELCOME TO SEELIVE

- **Seelive designed a comprehensive portfolio of sensors and devices to help you optimize your entire operations deftly. We offer an array of sensors that suits today's industrial needs and are qualitative, sustainable, and technology-driven. Our products are easy to configure, install, integrate, and maintain.**
- **SeeLive Technologies Pvt. Ltd.** is established in the year 2016 by **Mr.Kirit Sobti** and **Mr.Rohit Khattar** with the vision to deliver innovative sensor technology to address drinking water and wastewater related critical issues.
- With this quest and under their strong guidance and leadership, SeeLive's team, after five years of rigorous research and testing, has developed smart sensors addressing critical water and wastewater issues challenging today's industrial fraternity.
- **SeeLive stands for products of extraordinary quality and customized sensor solutions.** We believe our strength lies within the brains working with us. The team at SeeLive has a combination of knowledge and dedication, and we deliver not just a product but a result-oriented quality product that offers effortless solutions and work on their own. The product gives insightful information and evaluation.



# SEELIVE CERTIFICATION

- With our incessant efforts in the quest to deliver excellence and to guarantee a high level of security in all our processes, SeeLive has received the certificate according to **ISO 9001:2015 certification of Quality Management System** as well as **Certificate of Compliance (IoT Sensors and Devices)**.
- Today our assortment includes numerous customized sensors and devices that give quality system support.

# SEELIVE CERTIFICATION



# PROBLEM STATEMENT

01

A present study identified a total 140 incidents and 302 deaths from 1992 to 2018 due to manual scavenging. Out of 140 incidents a total of 51 incidents were covered by the study in which 97 deaths were reported.

02

Honorable Supreme Court of India, in a landmark judgment, declared that a person being made/forced to enter into a manhole or septic tank would be considered as a crime even in an emergency situation and in case of death of the person, a compensation of Rs. 10 lakhs would be awarded to the family of the deceased.

# NEED

- Sewerage is the backbone of rural and urban cities.
- Most of the sewerage systems are not adequate as they were built decades or centuries ago.
- The present sewerage system is not high tech; heavy rains and other obstructions or extreme conditions cause frequent sanitary system overflow (CSO).
- When the flow of wastewater is obstructed in the pipe, the wastewater then backs up and overflows through a manhole.
- Currently, the cleaning of sewers and septic tanks is done with jetting and suction machines that use water pressure to clean out the sludge.
- However, suction devices are often incapable of cleaning out blockages in manholes or septic tanks. The same with jetting, which uses the force of water to wash out sewer lines.
- At these times, it becomes imperative/necessary for human beings to enter and clean the clog.
- Such situations arise the need to have human intervention in the form of manual scavenging.

# WHAT IS E-SEWAGE SENSOR TECHNOLOGY?

The E-Sewage technology detects early signs of sewer system overflows and allows the municipality to observe every manhole connected in the network. It provides broad sewage management visibility across the operational processes.

The proposed sensor is low-cost, affordable, and intelligent in handling the complex issue of sewage overflows.

With the help of E-Sewage sensor, the municipalities can take timely actions to overcome overflow issues.

- E-Sewage Technology offers a robust system to address the sewage overflow problem well in time.
- The device sends a signal to the SAFAIMITRA in real-time of the upcoming rising level/ blockage of a particular manhole.
- This helps the sewerage personnel to start their maintenance work more intelligently and effectively.
- Now, sewage cleaning workers need only be dispatched to the site when necessary, equipped with the tools and knowledge required to fix the problem.


# SOLUTION



**The level sensors are installed in the manholes and are equipped with fill level measurement and repost the data in real time to the authorities.**



**It is supported with GPS AND GIS Technology, therefore it can send its exact location of the drain's blockage.**



**Alerts are generated before there is a chance of overflow thus preventive maintenance can be done.**



# SEELIVE E-SEWAGE AUTOMATION SYSTEM KEY FEATURES

- **Smart analytical software technology Low-cost and affordable**
- **Reduce manual scavenging issues Easy to install and operate Detects and forecast real-time data or near-real-time values 24\*7 dashboard window**
- **Buzz alarm before the hazardous situation**
- **Efficient & Intelligent operational processes**
- **Set alarm points**
- **E-Sewage sensor technology that detects early signs of overflow/blockage in the sewer system and send alerts to the authorities well in time.**

# HOW E-SEWAGE TECHNOLOGY WORKS

- The sensor detects early signs of sewer system overflows and
- Sends SMS Alerts of upcoming overflow/blockage in real- time
- It shows the alert message on the web portal identifying the upcoming hazardous situation like increasing of water level in the manhole that may lead to sewage overflow /flooding conditions.
- Also, each sensor has an alert light system. Now, the Safaimitra can see a light on top of the sewer manhole indicating the real manhole condition. The SAFAIMITRA can view the online status of each manhole at its location instantly.

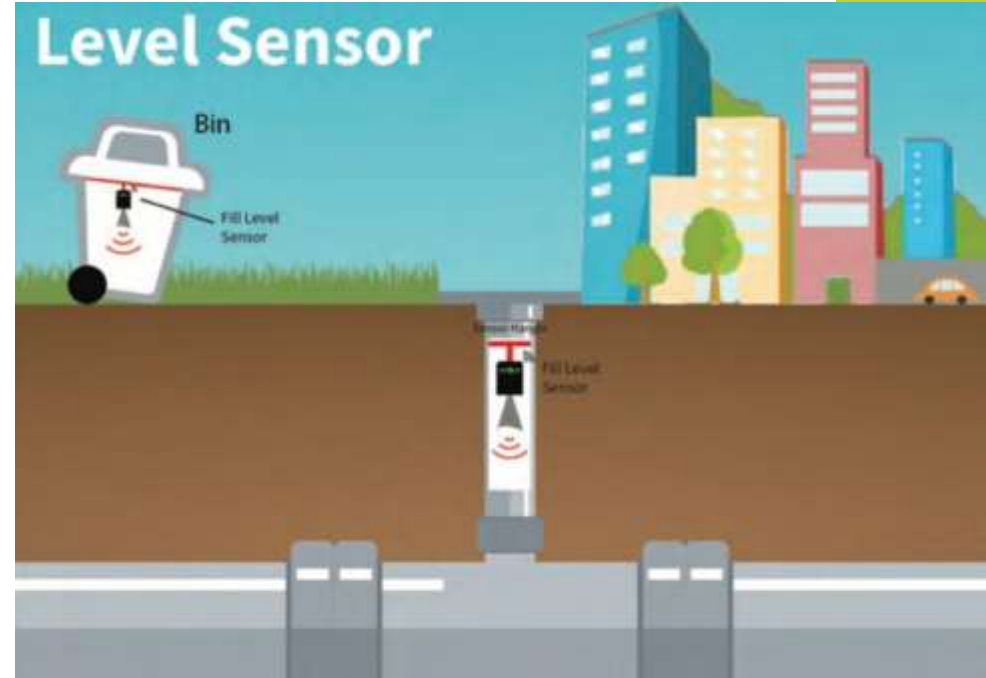
# DRAIN SENSOR



- **Product Descriptions**
- Completely wireless
- Robust weatherproof and non-corrosive enclosure
- Up to 3-year battery life
- Lightweight and easily mounted anywhere
- Can connect to several IoT networks or GPRS
- Maintenance -free - install & forget
- Network security and reliability



# GRAPHICAL REPRESENTATION





**1. MAIN HOLE JAGGI HAVELI  
NEAR DHARUHERA CHUNGI,  
RATI BANIYA SHOP**



**4. NEW BASTI , INFRONT OF  
HARO SHANKER VINOD  
KUMAR STORE**



**7. PURANI ANAJ MANDI, NEAR  
BIKANER HANDLOOM**



**4. NEW BASTI , INFRONT OF  
HARO SHANKER VINOD  
KUMAR STORE**



**5. JAGAN GATE , LEO CHAOK ,  
NEAR NEW VISHWA KUMAR  
REPAIRING CENTER**



**6. JAGAN GATE -LEO CHAOK ,  
NEAR POLICE SATATION**



**1. MAIN HOLE JAGGI HAVELI  
NEAR DHARUHERA CHUNGI,  
RATI BANIYA SHOP**



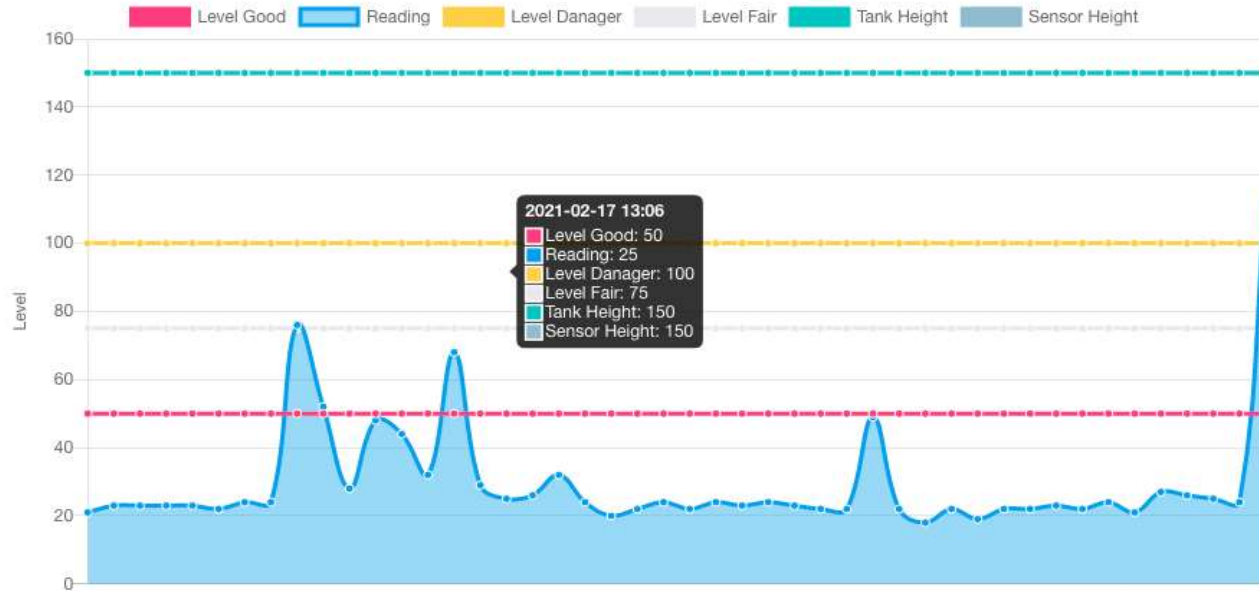
**2. DELHI GATE ( GOLE  
CHAKKAR), NEAR SAINI  
SWEET**



# DASHBOARD

## Tank Data

Overview of this year live charts



150 cm

Sensor Height

100 cm

Danger Level

1000 cm

Tank Length

24 cm

Tank Width

150 cm

Tank Height





BHUPINDER SINGH  
ks0000001



Dashboard

Level Sensor

Motor Status

Pressure

Motor ON/OFF configuration

Company  
HARYANA STATE

District  
REWARI

Town  
REWARI

Start Date  
17/02/2021

End Date  
18/02/2021

Select Location  
DELHI GATE- GO

Current Level

43 CM

Data Interval 90 Minutes



Over Flow

0

Total Over Flow Time



Last Update

5 Min ago

Feb 18 2021 10:51AM



### Tank Data

Overview of this year live charts



# SMS ALERT



12:32

4G

< 303



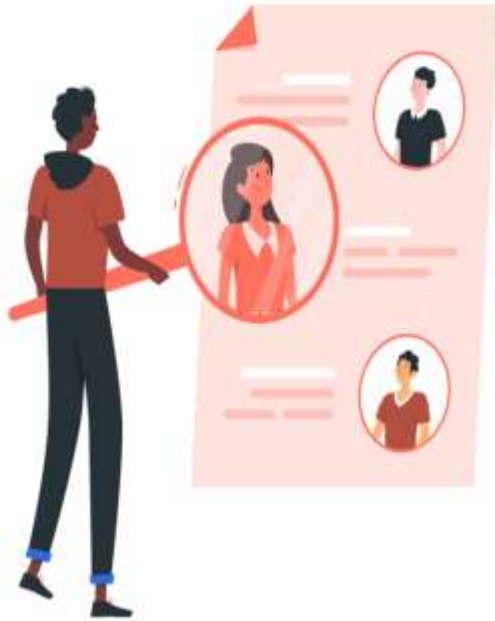
BW-SMSINF >

Dear sir, Sewer at JAGGI HAVELI- DHARUHERA CHUNGI, REWARI is above Danger level and overflowing. Arrange to Desilt the Sewer line in the area. Thanks HSCSK

Dear sir, Sewer at NEW BASTI-BEHIND SHIV MANDIR, REWARI is above Danger level and overflowing. Arrange to Desilt the Sewer line in the area. Thanks HSCSK

Filtered by SMS Filter

# MEDIA COVERAGE



जिंदगी बचाने का पायलट प्रोजेक्ट: सीवररेज में लगाए सेंसर, ओवरफ्लो का आएगा मैसेज, सफल रहे तो पूरे प्रदेश में होगी व्यवस्था

बैराट्टी एक निर चर्चा



- सफाई कर्मियों का जोखिम होगा कम
- आयोगा चेयरमैन कृष्ण कुमार ने मौके पर रखकर सेंसर लगावाए



THANK  
YOU!!!!!!

see*live*

